

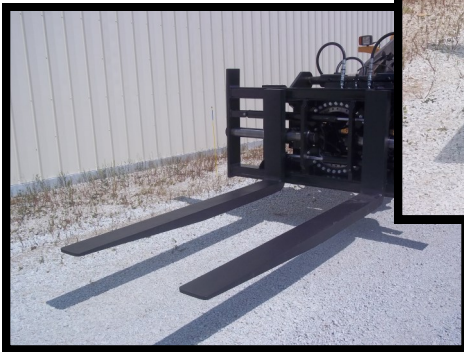


VERSATILITY

ADJUSTABLE FORKS & CARRIAGES FOR WHEEL LOADERS



INNOVATIVE
HYDRAULIC CONTROL
ONLY REQUIRES 1 SPOOL
TO RUN 3 FUNCTIONS



STANDARD PALLET HANDLING & HEAVY SERVICE APPLICATIONS

VERSATILITY:

- ONE set of forks to handle all your material handling needs.
- Handle basic pallets, containers, implement equipment, pipe & other materials.
- EASY ADJUSTMENT with integrated SAS™ Ratchet Rail* to position forks for best versatility need for many worksite applications.
- Provide the proper balance for wide loads. Fork spacing from 2" to 260" available.
- PRECISION FABRICATED direct pin mounting or quick attach bracket mount available for any make or model of machine & coupler type.

ENGINEERED & BUILT TOUGH FOR YOUR SERVICE REQUIREMENTS:

- 65% MORE WELD is applied to SAS™ shaft mounted forks than traditional hook mounted forks, providing more durability.
- HEAVY LOWER IMPACT plate structure for long term durability*.
- SUBSTANTIALLY INCREASED BLADE LIFE. 100% of blade failure due to heel lock weldment stress is eliminated because SAS Heavy Duty Adjustable Forks use top swing lock forks which reduce fork elbow stress as compared to traditional heel locks.
- Breakout force capable forks can be engineered by special request.

SAS FORKS attachments are trusted to handle over 12 Million lifts annually!

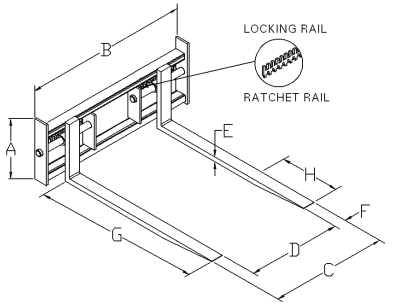
BEST SUITED FOR:

- Any size wheel loader or backhoe. Pin or quick coupler mounting.

*HEAVY DUTY MODELS: STYLE # 3 & 4

ADJUSTABLE FORKS & CARRIAGES FOR WHEEL LOADERS

4. Wide Heavy Duty Carriage: Shaft Mt



Special Features:

- Triple Functions run with 1 spool utilizing SAS Innovative Hydraulic Splitter Valve System.
- Fork Positioner (in / out)
- Carriage Side Shift (left/right)
- Carriage Tilt 10 degrees

Notes:

- Hydraulic Fork Positioner Not Designed to be used when carrying load
- Hydr. Carriage Side Shift Not Designed to be used when loaded
- Hydr. Lines from carriage to machine Not included.

Machine: Sample Machine Wt 53K 65K
Existing 3rd spool: ___ Separate lever ___? ___?
___ Integrated roller on joystick ___? ___?

Innovative single spool splitter to 3 function valve system: yes

Estimated Fork Assembly Weight 6,500 lbs

Capacity of pair of fork blades at 2' load center 48,000 lbs

Capacity of Machine & fork at 2' load center est. 15,000 lbs

(>IMPORTANT: Request Machine OEM Ratings<)

Shaft Mount 4.25"

A-Back Height of outside frame uprights 48"

Back Height of carriage cross frame 40"

Back Height of fork blade 40"

B-Carriage Frame Width** 96"

-Overall Outside Shaft Width 99.5"

C-Max Outside Fork Spacing 92"

D-Min Inside Fork Spacing 24"

FORGED STEEL FORKS

E-Blade Thickness 95 mm ~ 3.75"

F-Blade Width 200 mm ~7.88"

G-Blade Length 96"

H-Taper Length: Typical 49%

FORK MOVEMENT: Hydraulic Fork Positioner yes

*** Pressure Reliefs Required if 3rd spool exceeds 3,000 PSI

Hydraulic Carriage Side Shift yes

Hydr. Carriage Side Shift Distance (each side center) 6"

Hydr. 10 degree right/left tilt yes

Swing style fork blades (no), Vertical Floating forks (no)

No Swing: Top lock yes

Operating temperature Best 30°F to 90°F; don't exceed min -25°F or max 150°F

Color Black or Yellow

Customer Sign X: _____ Date: ___/___/___

Print Dealer Contact Person (if any): _____

Specifications may vary for engineering, if critical please note as "critical" above. Due to continuous product improvement, SAS reserves the right to make changes to the specification shown herein.

BWQ#

Contact:

S.A.S. of Luxemburg, Ltd.
133 Center Drive—Hwy 54
PO Box 260
Luxemburg, WI 54217-0260 U.S.A.

Contact:

Phone: 920-845-2198
Paul@sasforks.com
Adam@sasforks.com

Web: www.sasforks.com/ultimate

CAPACITY CONSIDERATIONS: Load information:

Max Load desired? _____ # @ ___ Center

What are you lifting? _____

Max Load Size Ht. _____ Width _____ Depth _____

Will you be prying with the forks? Yes [No]

TOOL OR PALLET POCKET RESTRICTIONS

Pocket Spacing: Outside to Outside _____"

Pocket Opening: Height _____" Width _____"

MACHINE: Make _____ Model _____

Mount Coupler _____ Pin Mount _____

OEM Rating Review (if available)

Static tipping load—articulated _____ lbs @ 2' L/C

Rough Terrain-60% FTSTL: _____ lbs @ 2' L/C