

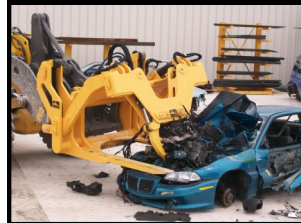


EXTRACT REVENUE FAST

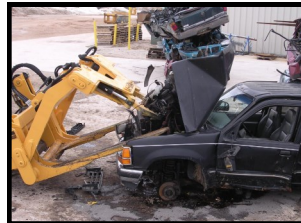
SAS™ SCORPION™ ENGINE PULLER FOR AUTO RECYCLERS



Class 20



Made in the USA



Class 30

INCREASE CASH RECOVERY FROM YOUR RECYCLING OPERATIONS.

FAST & SIMPLE INSTALLATION

- Fits direct pin mount machines and quick coupler machines
- Only requires 1 auxiliary spool

GENERATE REVENUE:

- Process end of life vehicles in less than 60 seconds.*
- Pull scrap engines and transmissions in 30 seconds.*
- 30%* more revenue by separating metals from bodies.
- 1000%* more revenue per lb. on wire harness from engine compartment & dash.
- 80% more visibility with a direct line of site from the operator's window through the forks.
- Cycle time less than 15 seconds from park to full extension.*
- Serviceable for long life. Replace blades in 3 hours or less on Class 30 Scorpion.

ENGINEERED & BUILT FOR OPTIMUM PERFORMANCE:

- ENGINEERED TOUGH for continuous prying & durability.
- Hardened pins and bushings and grease-able pivot points for extend service life.
- Hydraulic hoses & cylinders are protected to minimize potential damage from sharp objects.
- Built with high strength blades & Class 30 Scorpion has carriage skid plates for extended service.
- Clean up of ground debris is a snap with center plow blade.
- Speed is paramount in this design. Operator uses grapple from the cab, no torches, no personnel needed to hook up chains to pull or move engines. Safer, quicker & less costly removal of engines & transmissions.

SAS FORKS are trusted to handle over 12 Million lifts annually!

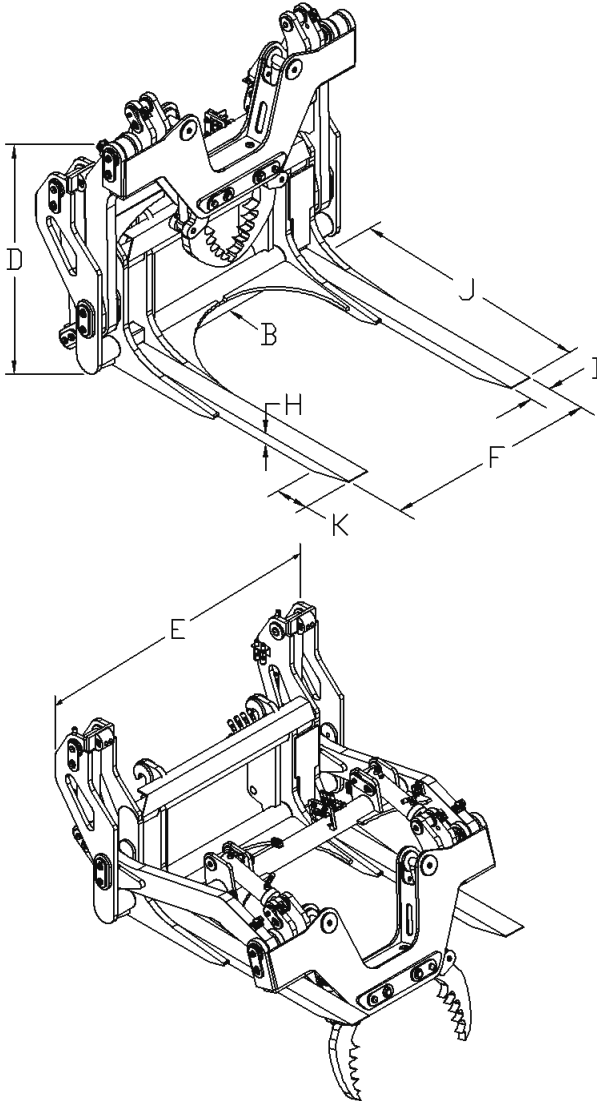
BEST SUITED FOR:

- Wheel loader with 3rd hydraulic spool controlled by separate lever, 2,500-4,000 PSI, 15-40 GPM, ≥3/4" ID lines
- 22,500 to 28,999 lbs. wheel loader curb weight; Class 20 (attachment 5,250#) (blade cap. 22,500# @2' L/C)
Class 20 attachment width limits: Pin Mount 45" Max. outside to outside on machine arm pin bosses. Quick Coupler frame 48" Max. outside width.
- 29,000 to 39,999 lbs. wheel loader curb weight; Class 30 (attachment 6,450#) (blade cap. 27,400# @2' L/C)
Class 30 attachment width limits: Pin Mount 55" Max. outside to outside on machine arm pin bosses. Quick Coupler frame 58" Max. outside width.
- 40,000 to 49,999 lbs. wheel loader curb weight; Class 40 (attachment 7,000#) (blade cap. 34,200# @2' L/C)
Class 40 attachment width limits: Pin Mount 55" Max. outside to outside on machine arm pin bosses. Quick Coupler frame 58" Max. outside width.



EXTRACT REVENUE FAST

SCORPION™ ENGINE PULLER FOR AUTO RECYCLERS



Item	CLASS 20	CLASS 30	CLASS 40
A-Wheel Loader Curb Weight	22-28k#	29-39k#	40-49k#
B-EXTRA WORK			
Center Clean Up Plow	yes	yes	yes
Side Pressure Plate	no	yes	yes
C-EXTENDED SERVICE			
Carriage Skid Plates	no	yes	yes
D-LOAD TIP BACK PROTECTION			
Back Height	60"	60"	60"
E-LOAD STABILIZATION			
Overall Width	70"	84"	84"
F-Fork Spacing	63"	60"	60"
Outside to Outside (fixed)			
G-Blade Solid Steel	A514	Forged	Forged
H-Blade Thickness x Width	3" x 7"	3" x 6"	3.5" x 6"
J- Blade Useable Length	84"	84"	84"
Useable Length Measured from vertical face of the carriage to the tip.			
K- Blade Taper Length	10"	12"	12"
L- Blade Taper Facing	__up OR__down	down	down
M- Installation Pins	no	no	no
N- Color	Yellow	Yellow	Yellow
O-Electrical Requirements:	24 volt	24 volt	24 volt

P-Hydraulic Requirements existing on loader:
 -Separate auxiliary control lever in cab. (Machines with single joystick integrated with 1st, 2nd & 3rd spools require engineering review & special quote & extra costs)
 -Min 2,500 PSI & 15 GPM, Max 4,000 PSI. Recommended 3,500 PSI & 35 GPM
 -Min 3/4" inside diameter auxiliary lines to front of loader arms
 -Customer to supply hoses from machine to Scorpion.

Customer Sign X: _____ **Date:** ___/___/___

Customer Company Name: _____
 Measurements may vary for engineering, if critical please note as "critical".

Contact:

S.A.S. of Luxemburg, LLC.
 133 Center Drive, Hwy 54
 PO Box 260
 Luxemburg, WI 54217-0260 USA
 USA Phone: 1-920-845-2198
 Phone: 1-877-727-3675 (1-877-SAS-FORK)
 Fax: 1-920-845-2309
 Email Rob: rob@sasforks.com
 Email Paul: paul@sasforks.com
 Email Adam: adam@sasforks.com
 Web Site: www.sasforks.com

BWQ:

CAPACITY CONSIDERATIONS Load Center:
 Machine capacity? _____ # @ _____
 Max Load desired? _____ # @ _____
 Machine curb weight? _____ #
TOOL OR PALLET POCKET RESTRICTIONS
 Pocket Spacing: Outside to outside _____"
 Pocket Opening: Height _____" Width _____"
MACHINE: Make _____ Model _____
 Serial # _____
 Voltage 24 Volt 12 Volt
 Existing 3rd Spool Separate Lever Yes No
 Attachment: 3 Pin, 4 Pin, Quick Coupler:
 Mfg _____ Series _____ S/N _____